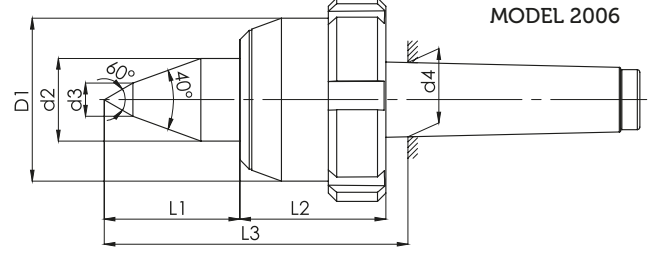
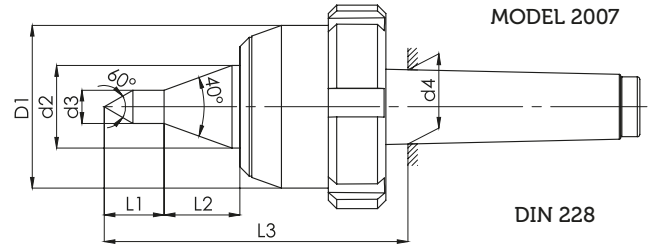


# Hassas CNC Somunlu Döner Punta

## Precision CNC Nut Live Center



MODEL 2006

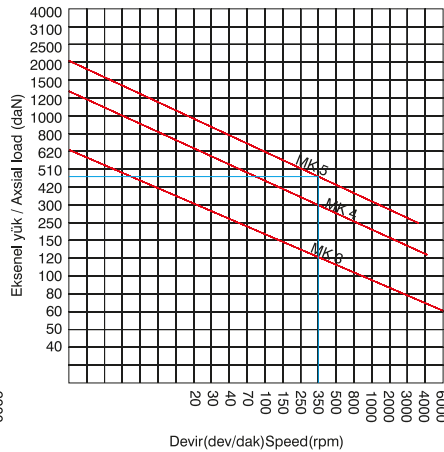
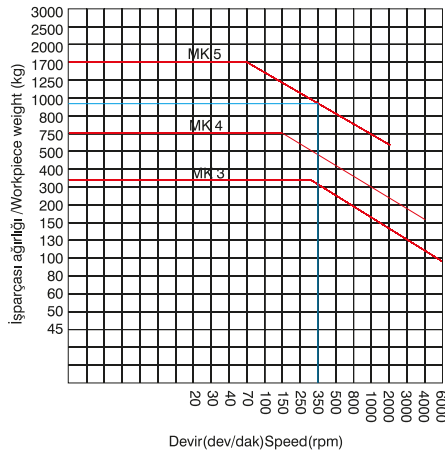


MODEL 2007

DIN 228

MODEL		2006			2007		
Mors Koniği / Morse conic	MK	3	4	5	3	4	5
Ölçüler mm Dimensions mm	D1	58	68	78	58	68	78
	d2	24.5	34.5	43.5	24.5	34.5	43.5
	d3	9	14	14	9	14	14
	d4	23,235	31,267	44,399	23,235	31,267	44,399
	L1	43	57	68	15	25	25
	L2	51	56	69	28	32	44
	L3	102	123	148	107	121	148
Uç Salgısı / Center Runout	Max	0.005	0.005	0.005	0.005	0.005	0.005
Ağırlık / Weight	kg.	2	3	5	2	3	5
Sipariş Kodu / Order Code		CS600	CS700	CS800	CS300	CS400	CS500

MODEL 2006 - 2007



Örnek: 350 Dev/Dak. ile dönen MK5 puntanın taşıya bileceği yük değeri  
Radyal yük: 935 kg  
eksenel yük: 475 daN

Example: load value that rotary MK5 center cold carry with 350 revolution /min  
Radial load: 935 Kg  
Axial load: 475 daN